

Friday 24th March

Families are invited to join

us in our Harmony Day

Morning Celebration.

HARMONY DAY



IMPORTANT DATES AND EVENTS:

Fri 24 Mar

- Harmony Day Breakfast
- 1/2 Vinu Hosting Assembly

Thu 6 Apr

- 3/4 Mairou Hosting Assembly
- Soccer Gala Day

Fri 7 Apr

- Public Holiday

Mon 17 April

- School is Back Term 2

MESSAGE FROM THE PRINCIPAL

Tomorrow morning, we will celebrate Harmony Day at Wagaman. The morning will begin with a community breakfast from 7:15am. Bacon and Egg sandwiches (\$4) and coffee (\$5) will be for sale.

The front gates will be closed, and all families can join us on the back veranda (Area 2) of our school. All staff and students will be in Area 2 until the bell rings at approximately 8:20am. Students will then make their way directly to their classes. Preschool teachers will be in the Preschool ready to start the day at 8:15am as usual. We invite families to make their way to the assembly area after breakfast for our Harmony Day Assembly, which will begin at 8:45am. After assembly, classes will be participating in a variety of Harmony Day activities.

REMINDER

☎ 08 8922 6011

🌐 www.wagamanprimary.nt.edu.au

📘 @wagamanprimaryschool

Phone the school office if your child is absent from school.

At the end of the term, both Ms Gant and Ms Hammond will be leaving us. We will miss them both. We thank them for the wonderful work they have done at Wagaman and wish them well for the future. We have secured Ms Oakleigh Green to teach Year 1/2 and Ms Lou Gogoll to teach Year 5/6. Ms Green is a recently graduated teacher who has been teaching in Western Australia. Ms Gogoll is an experienced teacher who has worked in the UK, South Australia, and the Northern Territory. Most recently Ms Gogoll has been working in the disability sector and is excited to return to teaching.

Our Year 3 and 5 students have been participating in NAPLAN testing over the past fortnight. Other than the Year 3 writing, all tests have been carried out online. We look forward to seeing the results which will be released next term.



Our car park is, for very short periods of time, a busy and congested place. It is important that families ensure they are using the drop off area correctly. When you enter the drop off zone, please ensure you move down as far as you can to allow space for others to come in behind you. It is also important that families ensure they are patient, as at times, it does take a little while for children to get into the car safely. If families enter the main car park area, ensure you park in a designated parking spot. It is not safe to stop behind cars and encourage students to get in your car in this space or on the road between the car park and drop off zone. Please remember that all adult actions in the car park are watched by children. It is essential that as adults we are all modelling safe practices to help keep our children safe around cars and roads.

The logo for Wagaman Primary School, featuring a circular emblem with a tree and the school's name.

WHAT SHOULD YOU DO?

A yellow diamond-shaped sign with a red border and the text "Help Keep Kids Safe" in colorful, handwritten-style letters.

A blue sign with a white "P" in a red circle with a slash, and the text "DROP & GO" below it. A car is parked in the zone.

✓ YES

Use the Drop & Go Zone to let children out or in cars.

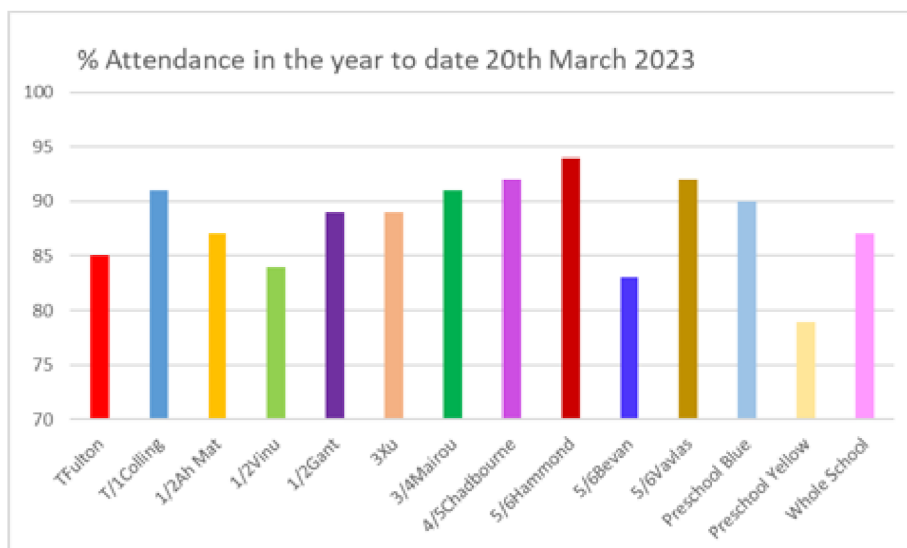
A car stopped at a road crossing with a child getting in. A yellow triangular warning sign is visible.

NO A red circle with a white slash, indicating a prohibition.

DO NOT stop at the crossing to let children out or in cars.

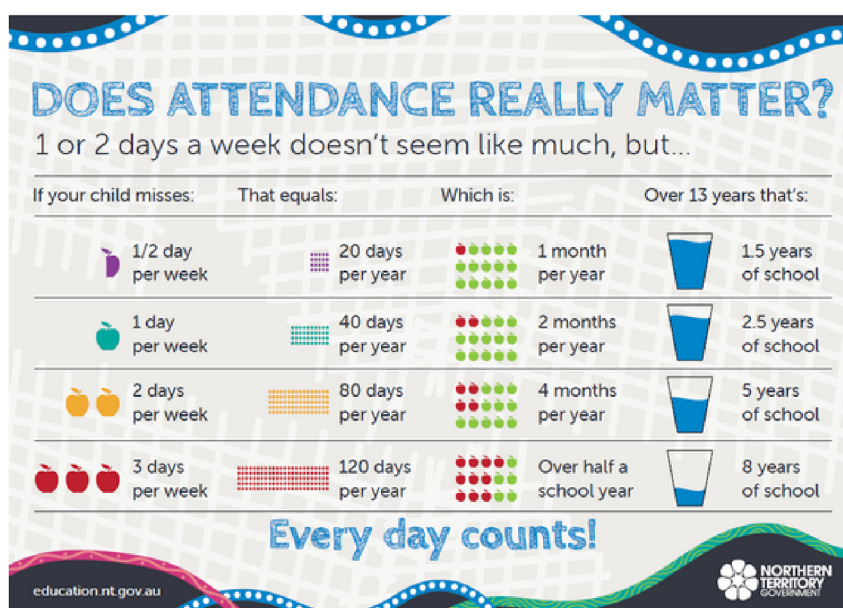
Each year our school asks families to pay voluntary contributions to help us purchase vital learning materials and school resources. In the past we have used this money to purchase iPads, computers, new playground equipment, a bus, and many other things. At Wagaman, our contributions are set at \$60 per year per child and reduced to \$50 per year per child for families of 2 or more children. We have not increased our contributions for over 5 years. A huge thank you to those families who have paid contributions this year. Payments can be made at our school front office and are very much appreciated. Our school council are also looking for fundraising ideas to support our school. If you have any ideas, please let our friendly administration team know. At the next council meeting we will be finalising our 2023 fundraising calendar.

TFulton	85
T/1Colling	91
1/2Ah Mat	87
1/2Vinu	84
1/2Gant	89
3Xu	89
3/4Mairou	91
4/5Chadbourne	92
5/6Hammond	94
5/6Bevan	83
5/6Vavlas	92
Preschool Blue	90
Preschool Yellow	79
Whole School	87



Congratulations to 5/6 Hammond who have the highest attendance for the year to date at 94%.

Congratulations also to Preschool Blue, 3/4 Mairou, T/1 Colling, 4/5 Chadbourne and 5/6 Vavlas who all have attendance of 90% or greater. Our goal this year is to have our whole school attendance 90% or greater. We love to see everyone every day at Wagaman.





The term has once again flown by. The last day for Term 1 is Thursday 6th April. Child Australia is currently taking bookings for the vacation care program. It is important that families finalise bookings to ensure a place in the program. School will resume on Monday 17th April.



At the end of next term, we will celebrate Wagaman Primary School's 50th birthday. If you have ideas, please come, and have a chat with either Mr Russell or I at school.

Looking forward to seeing everyone at school every day.

Kind Regards
Mandy McKinnon



Easter Hamper



Fundraising Raffle

*****Please Donate*****

Eggs, soft toys, art & craft materials, books, chocolates or anything related to Easter!

Thank you from The Preschool Team



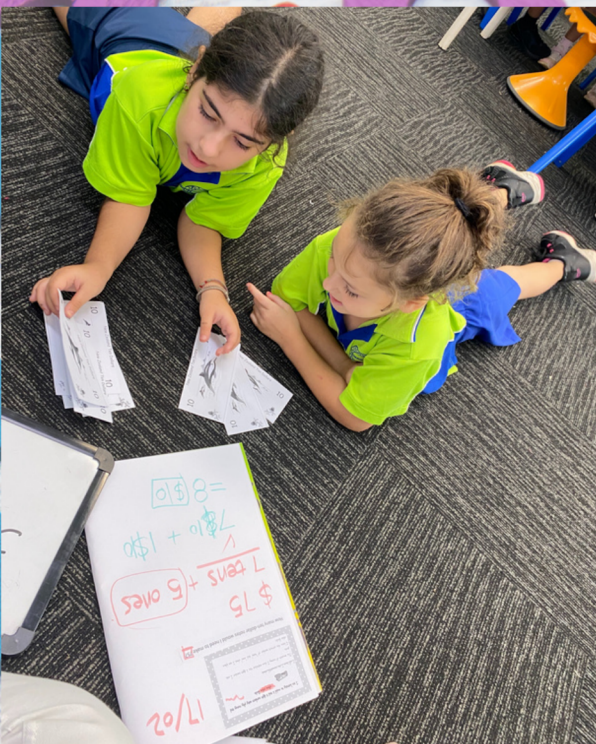
Raffle drawn on Wednesday 5th April 2023
Winners will be notified by phone



LEARNING SPOTLIGHT

YEAR 3 XU

We have been learning different strategies to solve maths problems.



We are being
THINKERS!



The children have been busy preparing for Harmony Day day celebrations by decorating the building.

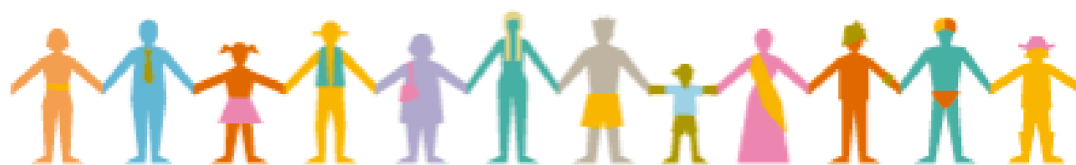


LEARNING SPOTLIGHT

YEAR 1/2 GANT

This term, the 1/2's have been busy learning all about technology and the ways in which it makes our lives easier. Last week, our class went on an excursion to the Aviation Museum, Stokes Hill Wharf and the Darwin Museum to explore how technology assists us in travelling. The children loved learning all about planes and boats, and how they have developed through time.





Harmony Day 2023

TOMORROW ch

Wagaman Primary School invites families to join us for a Harmony Day Morning Celebration.

Celebrate with us by wearing **orange** or traditional dress.

7:30 – 8:30 am

Fundraising BBQ breakfast in the Bush Tucker Garden

- \$4 bacon and egg sandwiches
- \$5 coffee

8:45 – 9:15 am

Harmony Day Assembly – hosted by 1/2 Vinu

9:15 – 10:15 am

Harmony Day class activities



School Photos

Wednesday 3rd May 2023

- Pre School Blue Group, Primary School and Siblings

Friday 5th May 2023

- Pre School Yellow Group and Siblings

Sibling envelopes can be picked up at the front office.

Return envelopes by Tuesday 2nd May 2023.

Full school uniform to be worn on photo day. **No sports shirts!**

- All students are required to wear their Wagaman green uniform shirts or Year 6 shirts.

PACK	PRICE	HI RES
BLUE PACK	\$52	YES
RED PACK	\$49	YES
GREEN PACK	\$47	YES
ELITE	\$65	YES

PERSONALISED GIFT PRODUCTS

Mouse Mat	\$20
Mug	\$22
Keyring	\$10
Magnet	\$11

STUDENT INFORMATION

Student Name: _____
 School Name: _____
 Roll Class & Year: _____
 Phone: _____
 Email: _____

SIBLINGS ONLY

DO NOT USE THIS ENVELOPE FOR INDIVIDUAL PHOTOS
 ALL FAMILIES MUST HAVE AN ENVELOPE TO ENSURE A PHOTO IS TAKEN

PERSONALISED GIFT PRODUCTS

A Pack	\$22
B Pack	\$27
Mouse Mat	\$20
Mug	\$22
Keyring	\$10
Magnet	\$11

I am paying by:

Cash (Enclosed in this envelope)
 Money Order (Enclosed)
 Online payment by credit card - Enter the purple code from the eldest child's individual envelope into the website then Write your receipt number below

MY ONLINE RECEIPT NUMBER IS: _____

TOTAL: _____



VOLUNTARY CONTRIBUTIONS

School contributions are voluntary. All parent contributions are used to purchase learning resources such as iPads, books and laptops for students to use in their class.

Visit our office or make your payment to:

Account name: Wagaman School Council 1 child = \$60

BSB: 035-306 2 children = \$50

Account: 930622 3 children or more = \$40

Ref: Child/children's name Preschool = \$50 per term



So far our families have contributed \$4820.



Take a peek, ONCE A WEEK



Every week, check hair and scalp of all family members for live lice and nits.

IDEAS IN NUTRITION

Protein Power

Accredited Practicing Dietitians recommend sending protein to school every day. Protein helps children grow strong muscles and get enough iron for thinking and learning. Need some inspiration? You could try....



1

Leftovers

If you made a meal with meat, fish, chicken or beans last night can you save a little of the left overs? Maybe there is enough to pack into a small container? Maybe it is just enough to spread onto a sandwich or wrap.

2

Easy & Cheap

You could try these options for school lunch boxes



- eggs
- baked beans
- canned mixed beans
- Canned tuna or salmon in spring water



WE WANT YOU!!



Sign up today for outdoor hockey

Cost: \$100 for under 8s, 10s, 12s, 16s*
FREE uniform & playing kit for NEW players**

Sign up here: www.edhc.com.au

*Plus annual HockeyNT insurance fee (\$55.10). NTG Sports Vouchers are accepted as payment towards club fee and uniforms.
**Free kit valued at \$170 includes playing uniform & hockey stick.

More info: secretary@edhc.com.au

